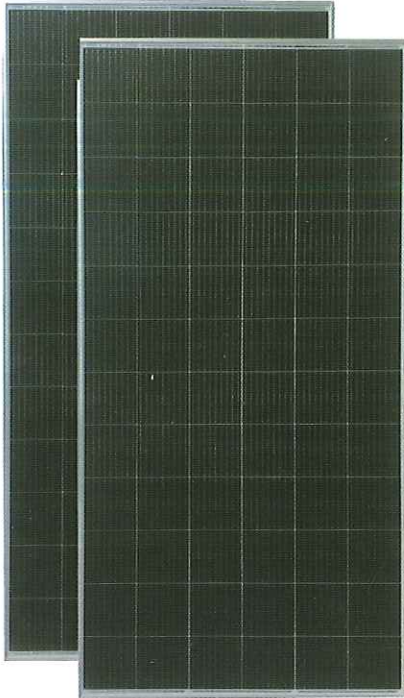




CABERA SOLAR
German technology solar panel



**MONO
PRC**

400W PERC 9BB-Cell Module
CABERA H 400-405/UA Series



Higher output power



Lower temperature coefficient



Less shading effect



Better mechanical loading tolerance

Comprehensive Certificates

- IEC 61215, IEC 61730, IEC TS 62804, IEC 61701, IEC 62716, IEC 60068-2-68.
- ISO 9001: 2015 Quality management systems.
- ISO 14001: 2015 Environmental management systems.
- OHSAS 18001: 2007 Occupational health and safety management systems.
- IEC TS 62941: 2016 Terrestrial photovoltaic (PV) modules - Guidelines for increased confidence in PV module design qualification and type approval.

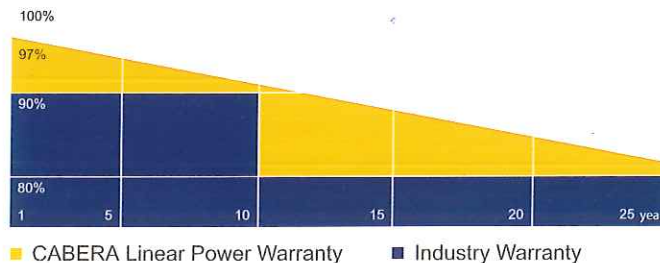


Australia



Superior Warranty

- 12-year product warranty
- 25-year linear power output warranty



■ CABERA Linear Power Warranty ■ Industry Warranty



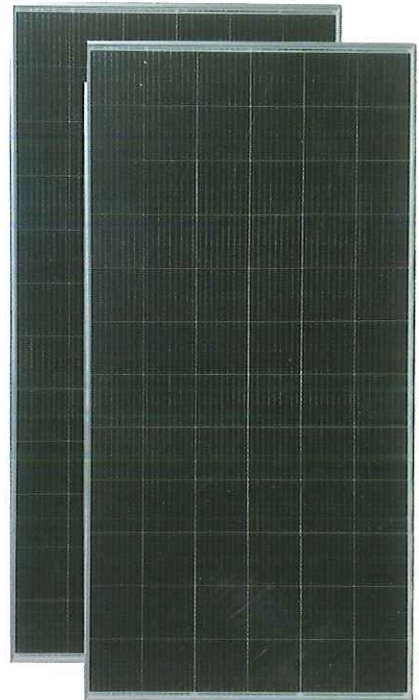


CABERA SOLAR
German technology solar panel



Monocrystalline Module Models

CBR-400M-72



Electrical Specifications

*STC : Irradiance 1000W/m², AM1.5 spectrum, module temperature 25 °C

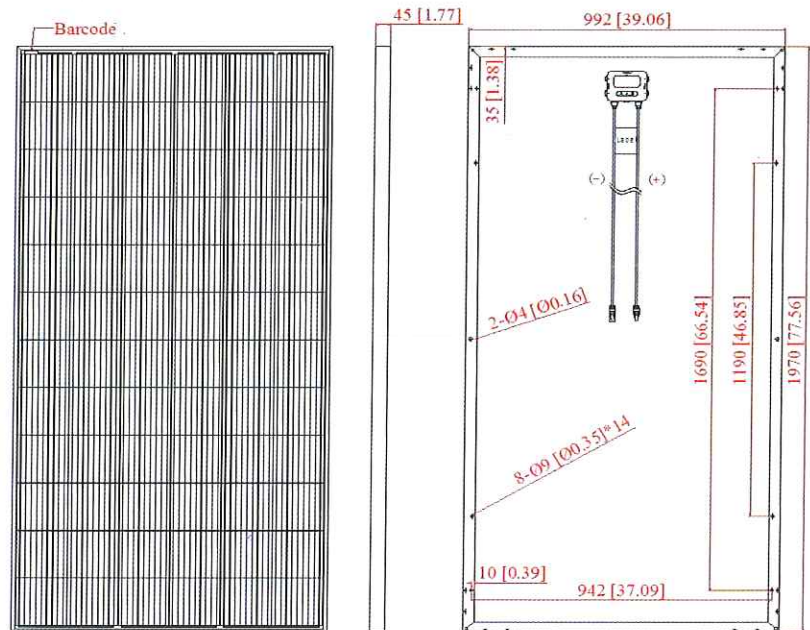
Model type	CBR-400M-72
Peak power (Pmax)	400W
Cell Efficiency	22.7%
Maximum power voltage (Vmp)	41.1V
Maximum power current (Imp)	9.73A
Open circuit voltage (Voc)	48.4V
Short circuit current (Isc)	10.3A
Power Tolerance	±3%
Maximum system voltage	1000V
Series fuse rating (A)	15
Number of bypass diode	3

Temperature Coefficients

Current Temperature Coefficient α(Isc)	0.03%/°C
Voltage Temperature Coefficient β(Voc)	- 0.32%/°C
Power Temperature Coefficient	-0.42%/°C
Nominal Temperature Of Cells(NOTC)	46±2°C
Application Temperature Range	-40~+85°C

Mechanical Characteristics

- Dimensions : 1970x 992 x 45mm
(77.56x39.06x1.77 inch)
- Weight: 21.5 kg (47.4 lbs)
- Solar Cells: 72 cells in series(6x 12)
- Construction: High-transmission low-iron tempered glass , EVA, TPT/TPE
- Frame: Anodized aluminum is mainly for improving corrosion resistance. Color: silver



Module Diagram

Output

- Cable LAPP(4 mm²)
- Lengths 900mm(-) and 900mm(+)
- Connector MC Plug Type IV

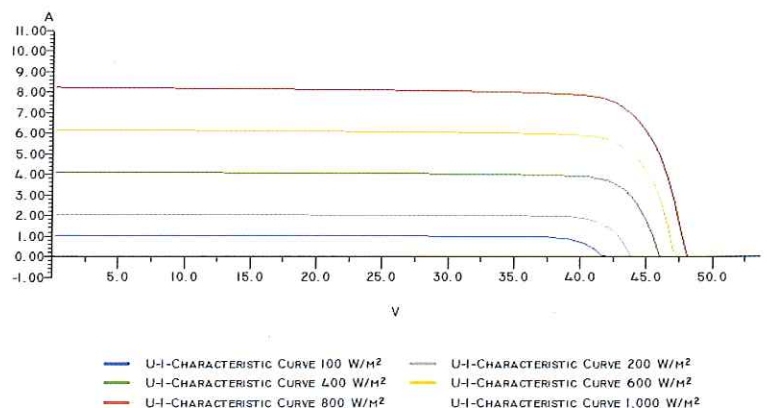
Module Warranty:

- 25-year limited warranty of 80% power output;
- 10-year limited warranty of 90% power output;
- 10-year limited warranty of materials and workmanship.

Note: This publication summarizes product warranty and Specifications which are subject to change without notice.

Product photos are for reference only, on behalf of actual product.

U-I-CHARACTERISTIC CURVE AT 25 °C



Electrical Performance